



1 Salamanca Place, Nine Elms  
London SE1

GARTON JONES.COM

# 1 Salamanca Place, Nine Elms London, SE1

GARTON JONES.COM

9 Albert  
Embankment  
London  
SE1 7SP

Lettings:  
+44 (0) 20 7735 1888  
nineelms@gartonjones.com  
www.gartonjones.com

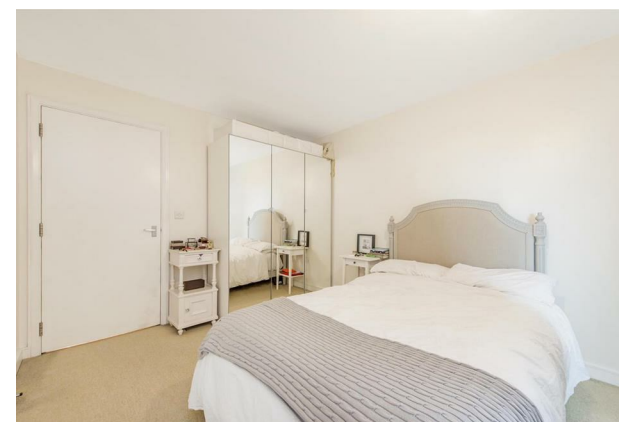
## £554 Per Week

A well-presented, spacious 1 bedroom apartment of 574sq.ft (53.3sq.m) available to rent in 1 Salamanca Place, a modern riverside development located between Lambeth & Vauxhall Bridges. This furnished property consists of 1 double bedroom, an open plan reception room with modern kitchen, good storage throughout, and a spacious bathroom suite. The building benefits from lift access and an on-site convenience store, as well as being moments from several cafes, pubs & shops. Transport links are excellent with the rail and tube services of Vauxhall a short walk away and a frequent bus service to the West End and City on the doorstep.

Please note furniture may differ to that shown in the current photos.

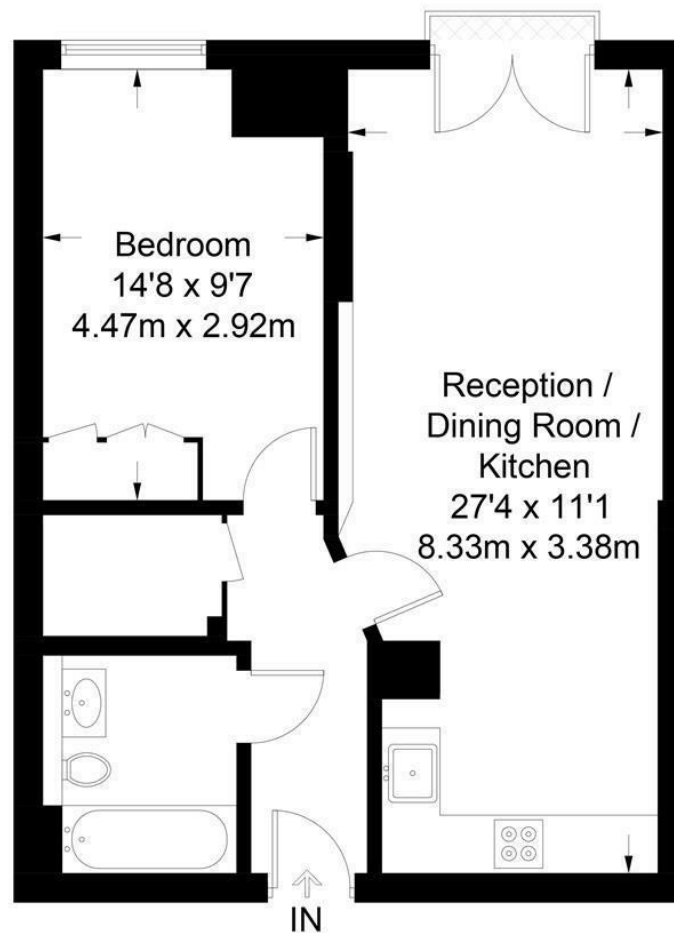
- Electricity Supply — Mains | Water Supply — Mains | Sewerage — Mains | Heating — Electric Radiators
- Broadband & Mobile Signal : Check Coverage via Ofcom
- Parking: No Parking
- Lift Access
- Building Safety: EWS1 Available on Request
- Council Tax Band E (London Borough of Lambeth)
- 5 Week Security Deposit
- Holding deposit equivalent to 1 week of rent
- Rent to be payable monthly in advance
- EPC Rating B (85)

- 1 Bedroom
- 574sq.ft (53.3sq.m)
- Bathroom
- Open Plan
- Modern Kitchen
- Good Storage
- Bicycle Storage
- Modern Development
- Lift Access
- 0.5 Miles to Vauxhall Station



**Salamanca**

Approximate Gross Internal Area = 574 sq ft / 53.3 sq m



Not to scale, for guidance only and must not be relied upon as a statement of fact.  
All measurements and areas are approximate only and have been prepared in  
accordance with the current edition of the RICS Code of Measuring Practice.

